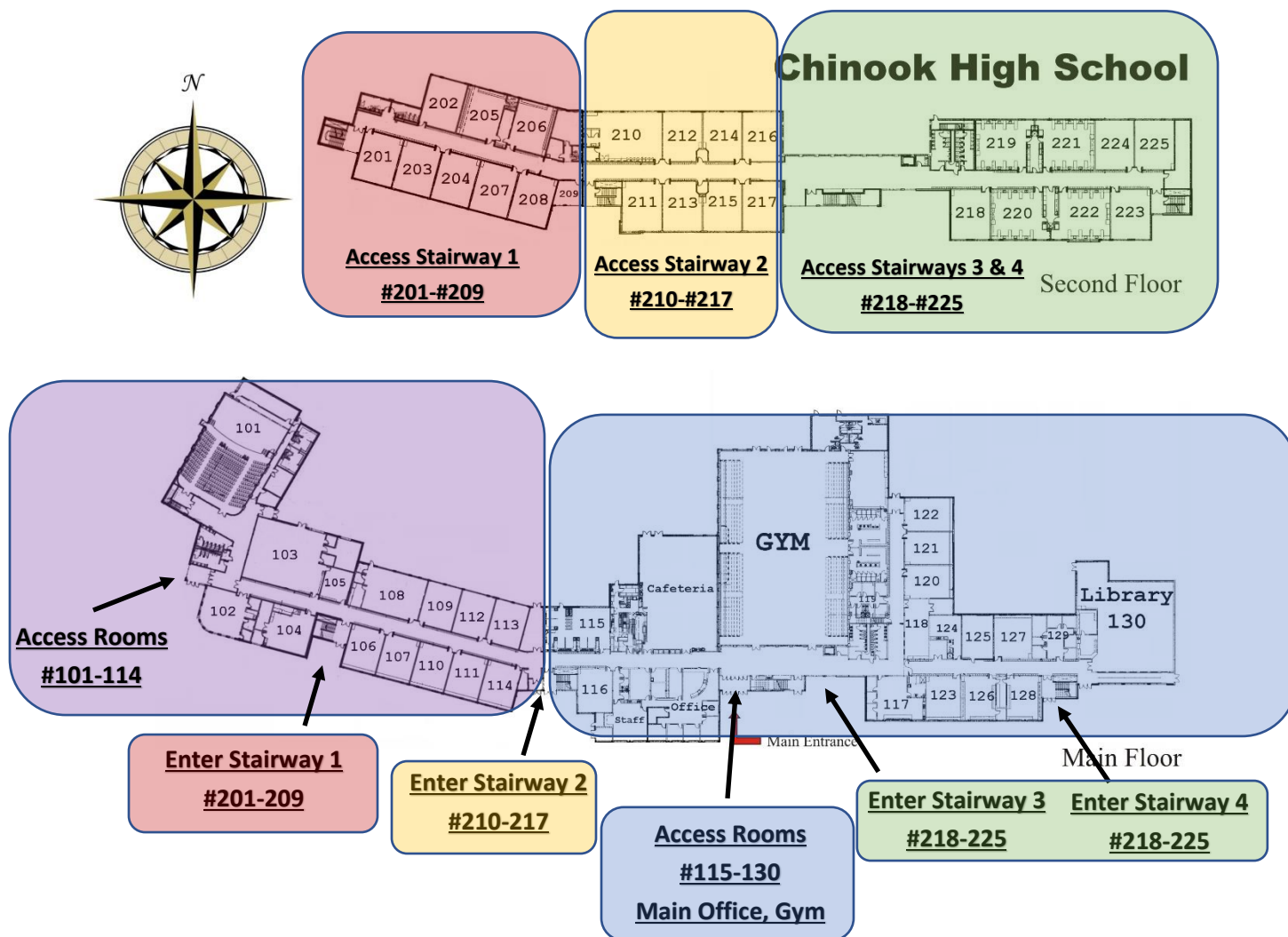


# Chinook High School

## Entry and Exit Map & Guidelines



### Where to Enter Chinook High School: According to Classroom Number

**Classrooms #101-116:** Enter through West Doors (near parking lot & Media Centre) doors

**Classrooms #115-130, Main Office, Gym:** Enter through Main Entrance

**Classrooms #201-209:** Enter through Stairway 1

**Classrooms #210-217:** Enter through Stairway 2

**Classrooms #218-225:** Enter through Stairways 3 & 4

**DOORS OPEN AT 7:45 AM, DOORS LOCK AT 8:05 AM**